

BASIC INFORMATION

Model	See Below Model Table	Static Load	135t Max, see below
Material	DC01/SPCC	Dynamic Load	NA
Dimension	See Below Model Table	Warranty	Life Long
Finish	Powder Coating	Color	RAL5012 / customized
Customized Dimension			Yes
Multiple Pallet Combinations			Yes



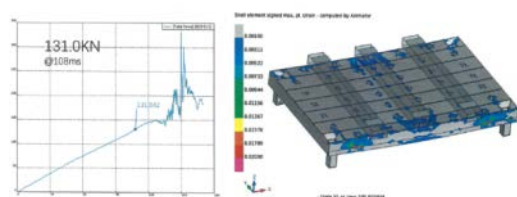
PRODUCT FEATURE

Strong Carrying Capacity

Lifelong warranty, Total cost saving; Returnable and good for Pooling

120100 pallets, carrying projected area 1.0x1.2=1.2 square meters. The pallet allows the selection of 4 (default), 5, 7, and 9 legs. Each foot is loaded simultaneously. The minimum static load of the pallet is about 60 tons (default), and the maximum is about 135 tons.

120100 pallet has 4 feet (default), the maximum span is 1.2 meters in the length direction, the center distance is within 600mm, and the load capacity is 3 tons (default) ~15 tons.



High Stacking Performance

Occupies less storage space; high handling efficiency

- The "upper pallet feet" sink into the "lower pallet cups," ensuring stable and reliable stacking. For stationary stacking, there is no height limit, maximizing storage space.
- 37 (default) ~ 59 pallets can be stacked per 6 meters in height.
- 120100 pallets are stored in single rows, allowing a stacking height of 3 meters

to 6 meters and using combined pallet pressure, 120100 pallets can be stored in multiple rows, reaching heights of tens of meters depending on forklift capacity.

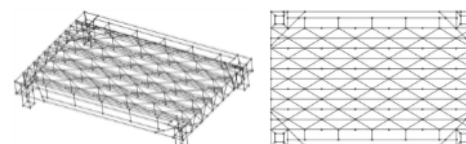
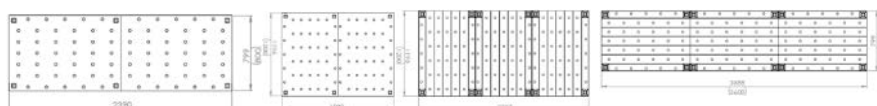
- During transportation, stacked pallets lock together, preventing sliding. A

forklift can transport dozens of stacked pallets at once, greatly improving handling efficiency



Flexible Size Expansion

- Unique mechanical structure, pallet ends butt welding, currently available in any size expansion according to 1208 or 1210 pallet.



Low Carbon / Eco-friendly / Long-lasting / Multifunctional Application / Buy-Back Service

- High-quality first-class cold-rolled plate, German brand coating powder
- Durable for life, no damage if used correctly, total cost saving
- Suitable for pooling, no fumigation, no wood, recycling, environmentally friendly
- Solve various problems in logistics applications

APPLICATION CASE

Visual Management

The color can be customized for users to do visual management. Several user application examples are as follows:

- Different colors represent the flow directions of different processes, making on-site flow smoother. Cost savings, no more struggling to find pallets

Color	Indication
	Next Station: Bending
	Next Station: Machinning
	Next Station: Welding
	Next Station: Coating
	Part Status: Non-conforming
	Next Station: Black Oxide (outsource)
	Next Station: Zinc Plating (outsource)
	Next Station: Assembly

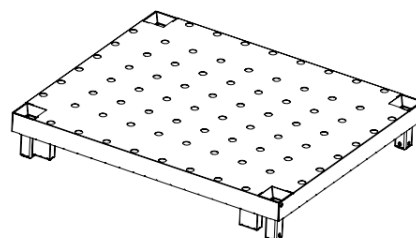
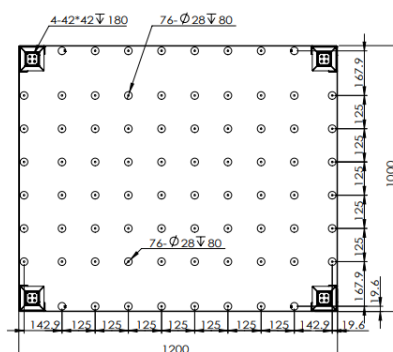
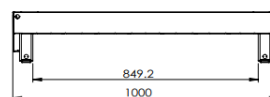
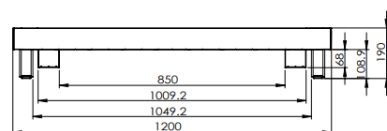


- Different colors indicate parts states: semi-finished, finished, defective, etc., easily recognizable at a glance.
- Different colors for production teams simplify counting contract pieces.
- Use FILE BOX and SIGNBOARDS to clarify parts status, ease information transmission, and boost efficiency.



Trolley / Cart/ Workbench/ Fixture Table

Quick-install Wheels and **Columns** expand pallets to workbenches, carts, and stackable mobile carts for various needs



OLE - Multi-functional Pallet



Partition Shelf / Profile Shelf

Use quick-install, height-adjustable [Partition shelf / Profile shelf accessories](#) to expand the pallet into shelves



Equipment Storage and Transportation

Thanks to the pallet's high load, heavy equipment can be secured with [Strapping accessories](#) for easy storage and transport

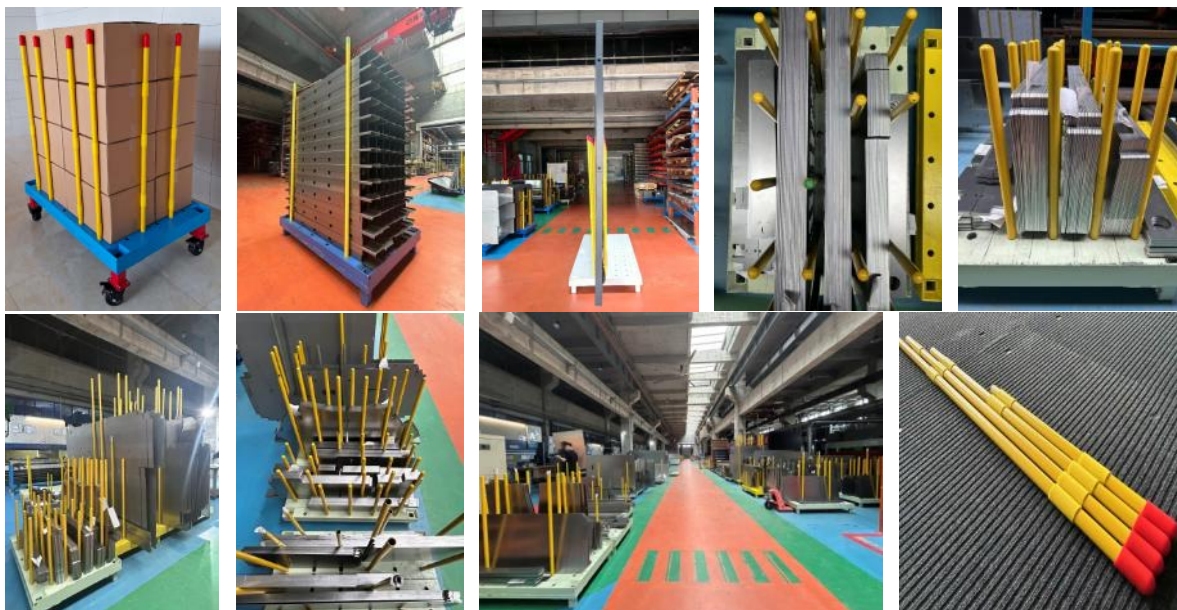


Parts Stacking / Large item anti-tip / Parts Organization

By utilizing [Round insert rods](#) of various lengths (Figure 9), the following can be achieved

- Stack parts as high as possible on a single pallet without worrying about tipping over, thereby increasing the utilization of the area per unit and reducing costs (Figures 1-2).
- Stand ultra-high and ultra-thin parts vertically without tipping over, enhancing safety and reducing costs (Figure 3).
- Separate various parts, making them easier to find, increasing the utilization of a single pallet, improving production efficiency, and keeping the site tidy and aesthetically pleasing
- Optional adjustable silicone sleeves and caps can be fitted on the round insert rods to ensure that the rods do not damage the surface of the parts they contact

OLE - Multi-functional Pallet



Pallet collar / Storage cage

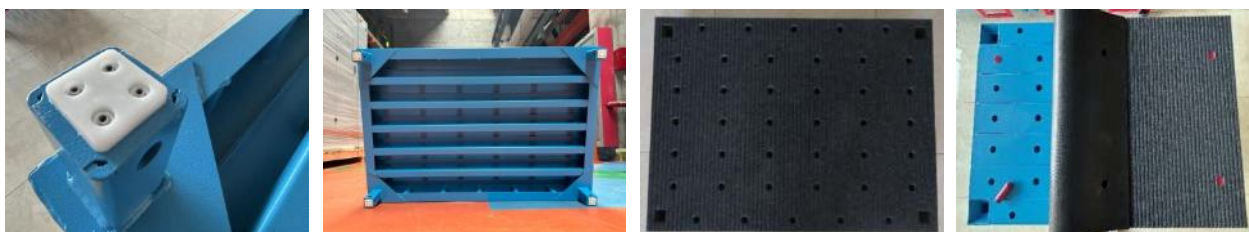
Pallets can be converted into pallet collars and storage cages using respective kits. The assembly-structured accessories are easy to assemble and disassemble.



Scratch-resistant

The bottom of the pallet is equipped with wear-resistant pads to prevent damage to epoxy flooring caused by metal contact, effectively protecting the user's floor (Figures 1-2).

Optional felt **Mats** with holes can be selected for the pallet, effectively protecting the surface of parts placed on the pallet from being scratched by metal objects (Figures 3-4).



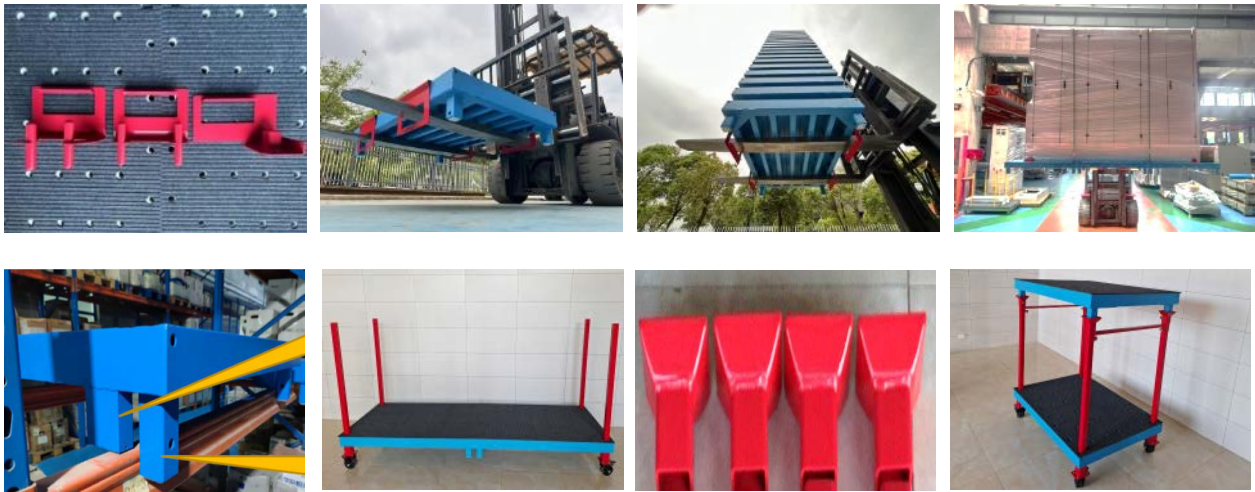
Forklift Safety / Stacking / Shelving / Multi-layer Pallet Expansion

OLE - Multi-functional Pallet

Quick-install **forklift protective covers** can ensure safety and prevent tipping during forklift operations (Figures 1-4).

Quick-install **shelf crossbars** can provide efficiency and safety when forklifts place pallets on shelves (Figure 5).

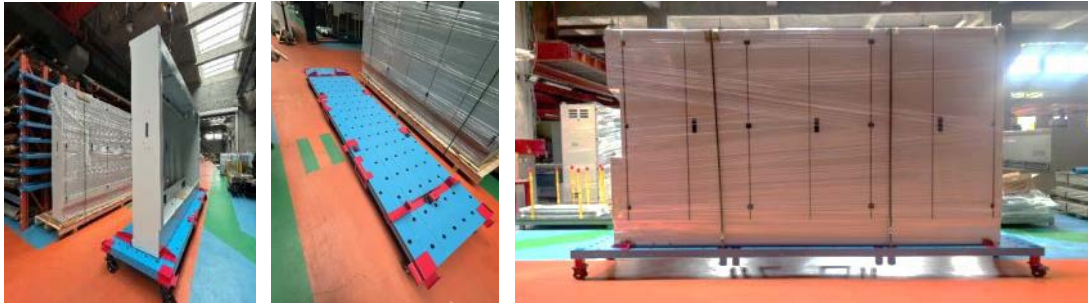
The use of **column** inserts and stacking feet allows for multi-layer expansion of pallets (Figures 6-8).



Placement of Irregularly Shaped Parts

Using pallets as a base and customizing support components can secure oversized or irregular parts. This is ideal for fixing irregular bodies, large parts, internal circulation, and client shipping

- 600*2600*2200 Cabinet, switching from wooden pallet to metal pallet, reduces costs through recycling. Quick-install casters also facilitate internal circulation, making it ideal for the electrical box and cabinet industry.



- For irregular parts like external protective shells, large castings, and shafts, custom fixtures and transport tools are used, but become unusable with product changes and can't be stacked, wasting space. Microone's solution uses **standard pallets with minimal custom supports**. When products change, only supports need replacement, allowing continued use of pallets, reducing costs. Standard pallets can be stacked, and custom supports stored separately, saving space. Here's a reference case.

Original transport rack from customer	Solution from Microone
Parts are placed in custom divider racks that are hard to access, unstackable	Standard pallets+round pads+mats+quick-install casters make parts easy to access and facilitate internal circulation. Stackable pallets save space
